




CUA Rules Review

Rule 7-Batting

 NATIONAL FEDERATION OF
STATE HIGH SCHOOL ASSOCIATIONS
**Official Line-up
Baseball**

DATE May 7, 22 TEAM Union Eagles

NO.	PLAYER	RE	POS.							
14	1 Abel		7							
SUB.										
9	2 Baker		4							
SUB.										
12	3 Charles		8							
SUB.										
44	4 Daniels		3							
SUB.										
32	5 Edwards		6							
SUB.										
17	6 Franklin		2							
SUB.										
24	7 George		9							
SUB.										
2	8 Hamilton		5							
SUB.										
19	9 Irwin		1							
SUB.										
10										
SUB.										
NO.	SUBSTITUTES	POS.								
6	Jackson									
11	Knutson									
28	Lerson									
35	Matthewson									
1	Nelson									
CONFERENCES										
PH	1	2	3	4	5	6	7	8	9	10
OFF										
DEF										
COURTESY RUNNERS										
PH	1	2	3	4	5	6	7	8	9	10
P										
C										

TO RE-ORDER CALL 800-775-5862

7-1-1 The batting order established at the beginning of the game shall be followed during the entire game except that an entering substitute shall take the replaced player's place in the batting order.

A batter is in proper order if he follows the player whose name precedes his in the lineup. An improper batter is considered to be at bat as soon as he is in the batter's box and the ball is live.

NATIONAL FEDERATION OF STATE HIGH SCHOOLS ASSOCIATION
Official Line-up
Baseball

DATE May 1, 22 TEAM Green Eagles

NO.	PLAYER	POS.	NO.
1	Reel	1	7
2	Baker	2	9
3	Charles	3	8
4	Daniels	4	3
5	Edwards	5	6
6	Franklin	6	2
7	George	7	8
8	Hamilton	8	5
9	Irwin	9	1
10			
11			
12			
13			
14			
15			
16			
17			
18			
19			
20			
21			
22			
23			
24			
25			
26			
27			
28			
29			
30			
31			
32			
33			
34			
35			
36			
37			
38			
39			
40			
41			
42			
43			
44			
45			
46			
47			
48			
49			
50			
51			
52			
53			
54			
55			
56			
57			
58			
59			
60			
61			
62			
63			
64			
65			
66			
67			
68			
69			
70			
71			
72			
73			
74			
75			
76			
77			
78			
79			
80			
81			
82			
83			
84			
85			
86			
87			
88			
89			
90			
91			
92			
93			
94			
95			
96			
97			
98			
99			
100			

COACHES

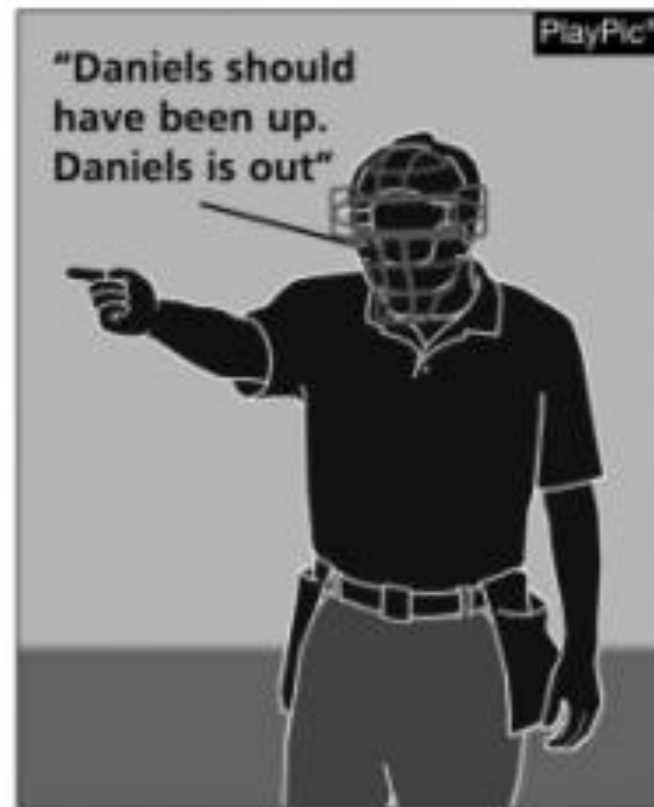
NO.	NAME	POS.
1	Jackson	
2	Reagan	
3	Larson	
4	Matheson	
5	Reagan	

SCOREKEEPER

NO.	NAME	POS.
1		
2		
3		
4		
5		
6		
7		
8		
9		
10		
11		
12		
13		
14		
15		
16		
17		
18		
19		
20		
21		
22		
23		
24		
25		
26		
27		
28		
29		
30		
31		
32		
33		
34		
35		
36		
37		
38		
39		
40		
41		
42		
43		
44		
45		
46		
47		
48		
49		
50		
51		
52		
53		
54		
55		
56		
57		
58		
59		
60		
61		
62		
63		
64		
65		
66		
67		
68		
69		
70		
71		
72		
73		
74		
75		
76		
77		
78		
79		
80		
81		
82		
83		
84		
85		
86		
87		
88		
89		
90		
91		
92		
93		
94		
95		
96		
97		
98		
99		
100		

PLAYERS

NO.	NAME	POS.
1		
2		
3		
4		
5		
6		
7		
8		
9		
10		
11		
12		
13		
14		
15		
16		
17		
18		
19		
20		
21		
22		
23		
24		
25		
26		
27		
28		
29		
30		
31		
32		
33		
34		
35		
36		
37		
38		
39		
40		
41		
42		
43		
44		
45		
46		
47		
48		
49		
50		
51		
52		
53		
54		
55		
56		
57		
58		
59		
60		
61		
62		
63		
64		
65		
66		
67		
68		
69		
70		
71		
72		
73		
74		
75		
76		
77		
78		
79		
80		
81		
82		
83		
84		
85		
86		
87		
88		
89		
90		
91		
92		
93		
94		
95		
96		
97		
98		
99		
100		



7-1-1 Penalty 2 Edwards has reached first base, and the defensive coach properly appeals that Edwards batted out of turn. The plate umpire rules that Daniels, the proper batter, is out.

INTERNATIONAL FEDERATION OF HIGH SCHOOL ASSOCIATIONS
Official Line-up
Baseball

www.PlayPic.com

NO.	PLAYER	POS.	HT.	WT.
10	Abel	3		
9	Baker	9		
12	Charles	8		
11	Daniel	3		
32	Edwards	6		
17	Franklin	2		
24	George	9		
2	Hamilton	3		
19	Irwin	1		
18				
16				
6	Jackson			
11	Kendall			
23	Larson			
22	Matthewson			
7	Nelson			

CONFERENCE

NO.	1	2	3	4	5	6	7	8	9	10
1										

COURTESY NUMBER

NO.	1	2	3	4	5	6	7	8	9	10
1										

© 2000 PLAYPIC.COM. ALL RIGHTS RESERVED.



7-1-1 Penalty 3 Once a pitch has been delivered to the succeeding batter, no appeal for batting out of order shall be granted. Even though the coach wants to appeal that Daniels is on base and was an improper batter, there has already been one pitch to Edwards. The appeal, even if it is correct, shall not be granted.



NATIONAL FEDERATION OF
STATE HIGH SCHOOL ASSOCIATIONS
Official Line-up
Baseball

DATE May 1, 11 TEAM Union Eagles

NO.	PLAYER	POS.	NO.							
10	1 Abel	1	7							
9	2 Baker	4	6							
12	3 Charles	3	8							
11	4 Daniels	5	5							
32	5 Edwards	6	6							
17	6 Franklin	2	2							
24	7 George	9	9							
2	8 Hamilton	3	3							
19	9 Jones	1	1							
16										
25										
SUBSTITUTES										
4	10 Jackson									
13	11 Kesteven									
23	12 Larson									
15	13 Matthews									
7	14 Nelson									
CONFERENCE										
NO.	1	2	3	4	5	6	7	8	9	10
NO.	1	2	3	4	5	6	7	8	9	10
COURTESY NUMBERS										
NO.	1	2	3	4	5	6	7	8	9	10
NO.	1	2	3	4	5	6	7	8	9	10

10-10-2000 (11-11) 10-10-10-10



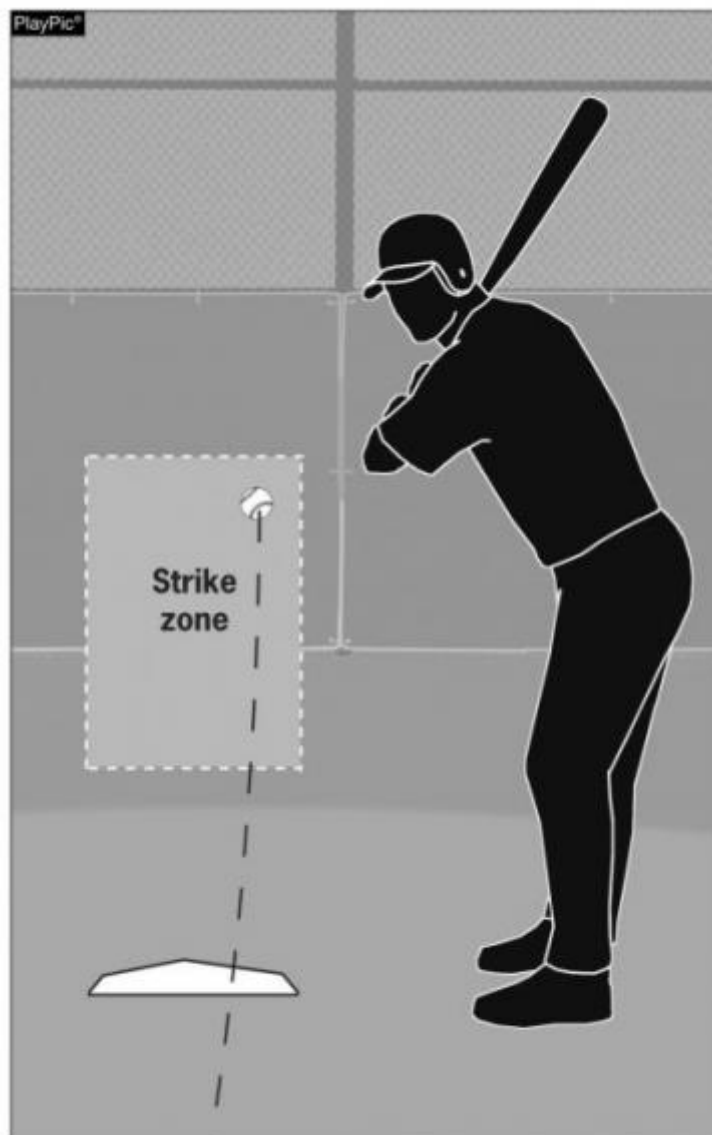
7-1-1 Penalty 4 Edwards batted out of order. Following a proper appeal prior to the next pitch, Daniels, who was the proper batter, is called out and Edwards is removed from first base. Edwards is now the proper batter.


NATIONAL ASSOCIATION OF STATE HIGH SCHOOL ASSOCIATIONS
Official Line-up Baseball
 Date: May 1, 2011 Team: St. Louis Eagles

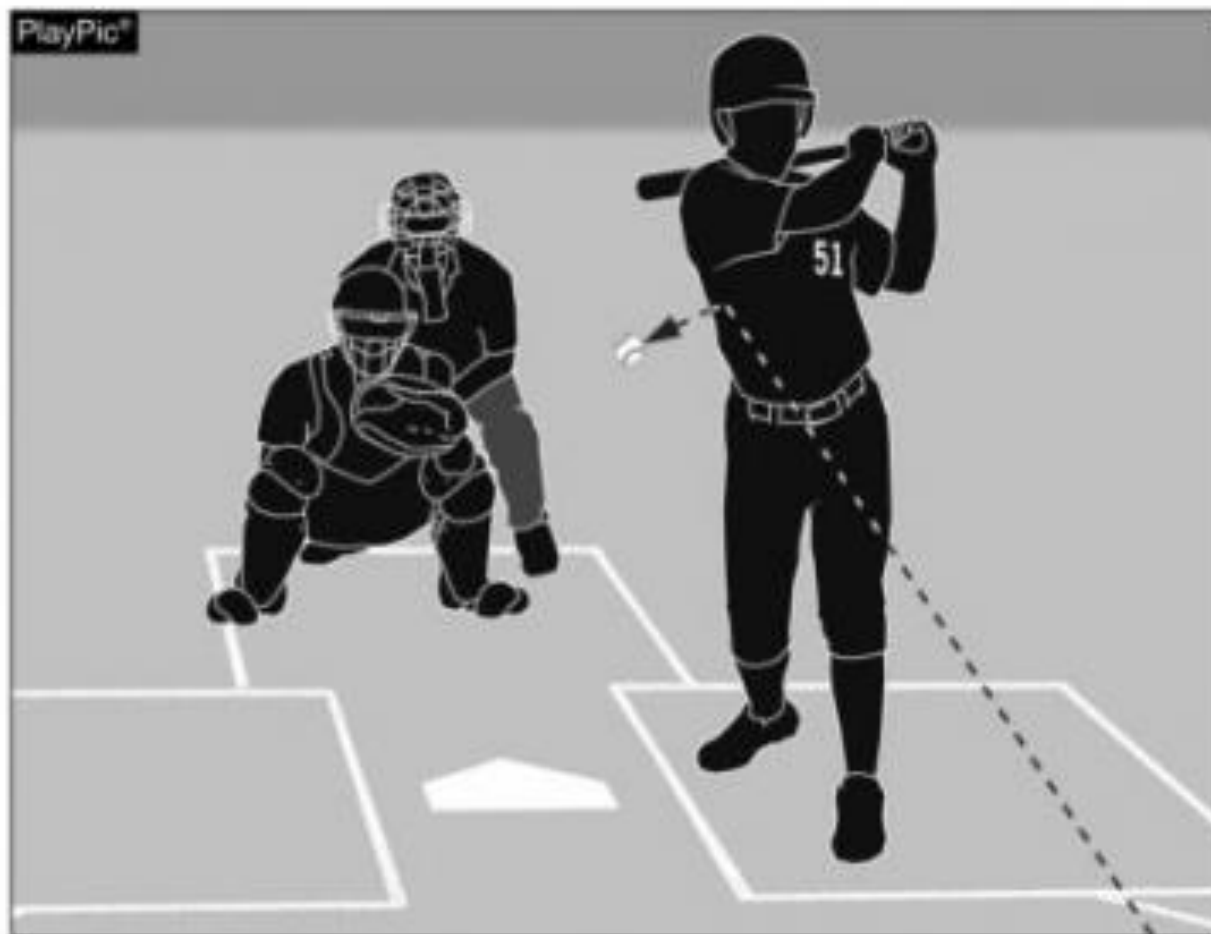
NO.	PLAYER	POS.	HT.	WT.
1	Alar	1	5	120
2	Baker	2	5	120
3	Cheney	3	5	120
4	Donald	4	5	120
5	Edwards	5	5	120
6	Franklin	6	5	120
7	George	7	5	120
8	Henderson	8	5	120
9	Smith	9	5	120
10	Johnson	10	5	120
11	Williams	11	5	120
12	Miller	12	5	120
13	Moore	13	5	120
14	Wright	14	5	120
15	Scott	15	5	120
16	Green	16	5	120
17	Adams	17	5	120
18	Bell	18	5	120
19	Murphy	19	5	120
20	Rivera	20	5	120
21	Cox	21	5	120
22	Howard	22	5	120
23	Ward	23	5	120
24	Carter	24	5	120
25	Evans	25	5	120
26	Turner	26	5	120
27	Phillips	27	5	120
28	Campbell	28	5	120
29	Roberts	29	5	120
30	Clark	30	5	120
31	Young	31	5	120
32	King	32	5	120
33	Wells	33	5	120
34	James	34	5	120
35	Rice	35	5	120
36	Cooper	36	5	120
37	Reynolds	37	5	120
38	Green	38	5	120
39	Baker	39	5	120
40	Adams	40	5	120
41	Miller	41	5	120
42	Moore	42	5	120
43	Wright	43	5	120
44	Scott	44	5	120
45	Green	45	5	120
46	Baker	46	5	120
47	Adams	47	5	120
48	Miller	48	5	120
49	Moore	49	5	120
50	Wright	50	5	120



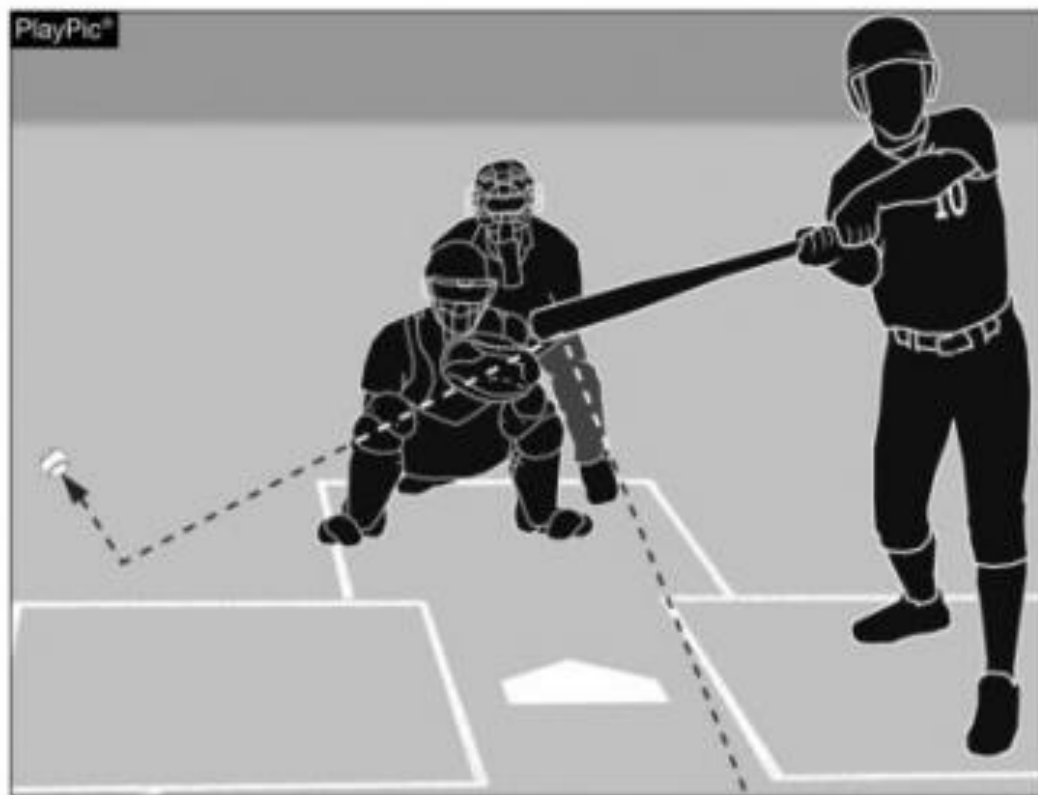
7-1-1 Penalty 5 When no legal appeal is made for batting out of order, the next batter shall be the batter whose name follows that of such legalized improper batter. Edwards batted out of order, but no appeal was made. The next legal batter is Franklin.



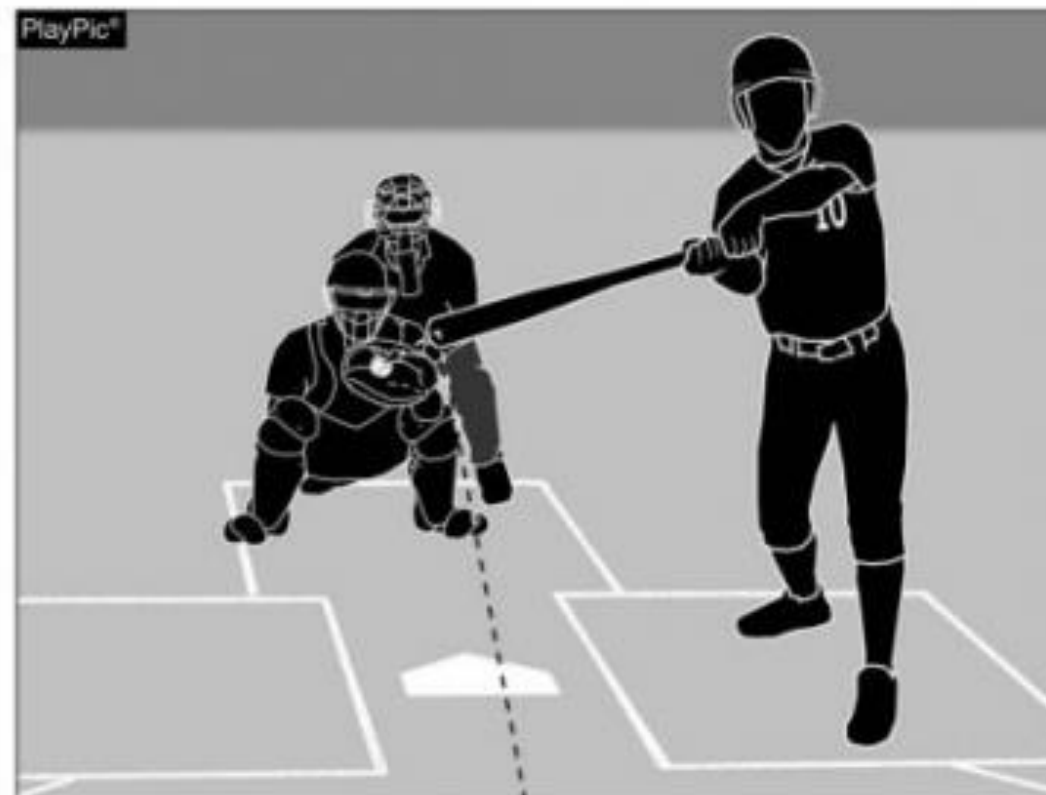
7-2-1a A strike is charged to the batter when a pitch enters any part of the strike zone in flight and is not struck at.



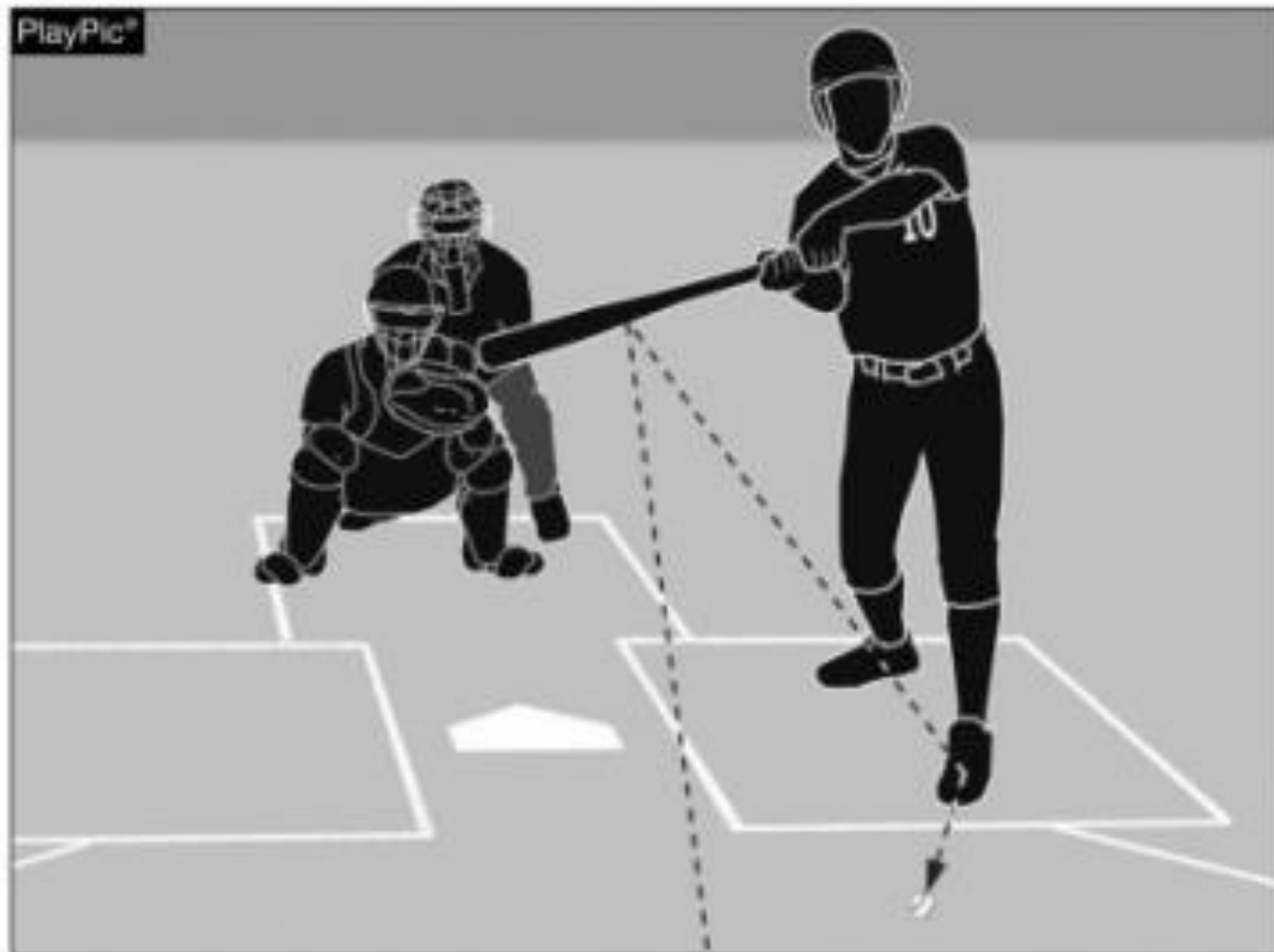
7-2-1b Even though the batter was hit by this pitch, he struck at the pitch and is charged with a strike.



7-2-1c A foul ball is charged as a strike to the batter when he has less than two strikes.



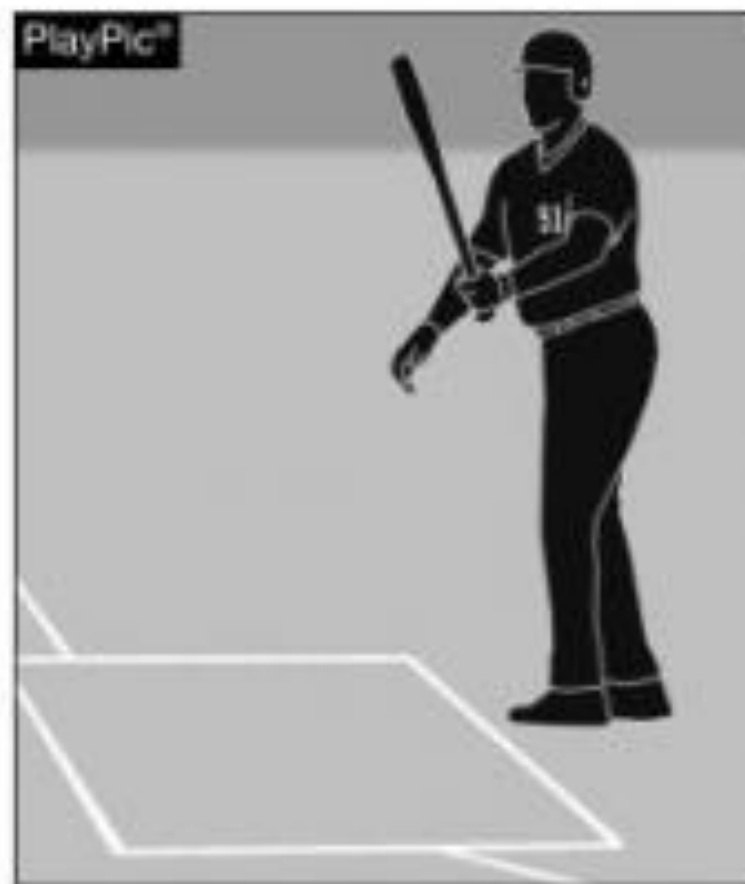
7-2-1d A foul tip is treated the same as a swinging strike (even on third strike).



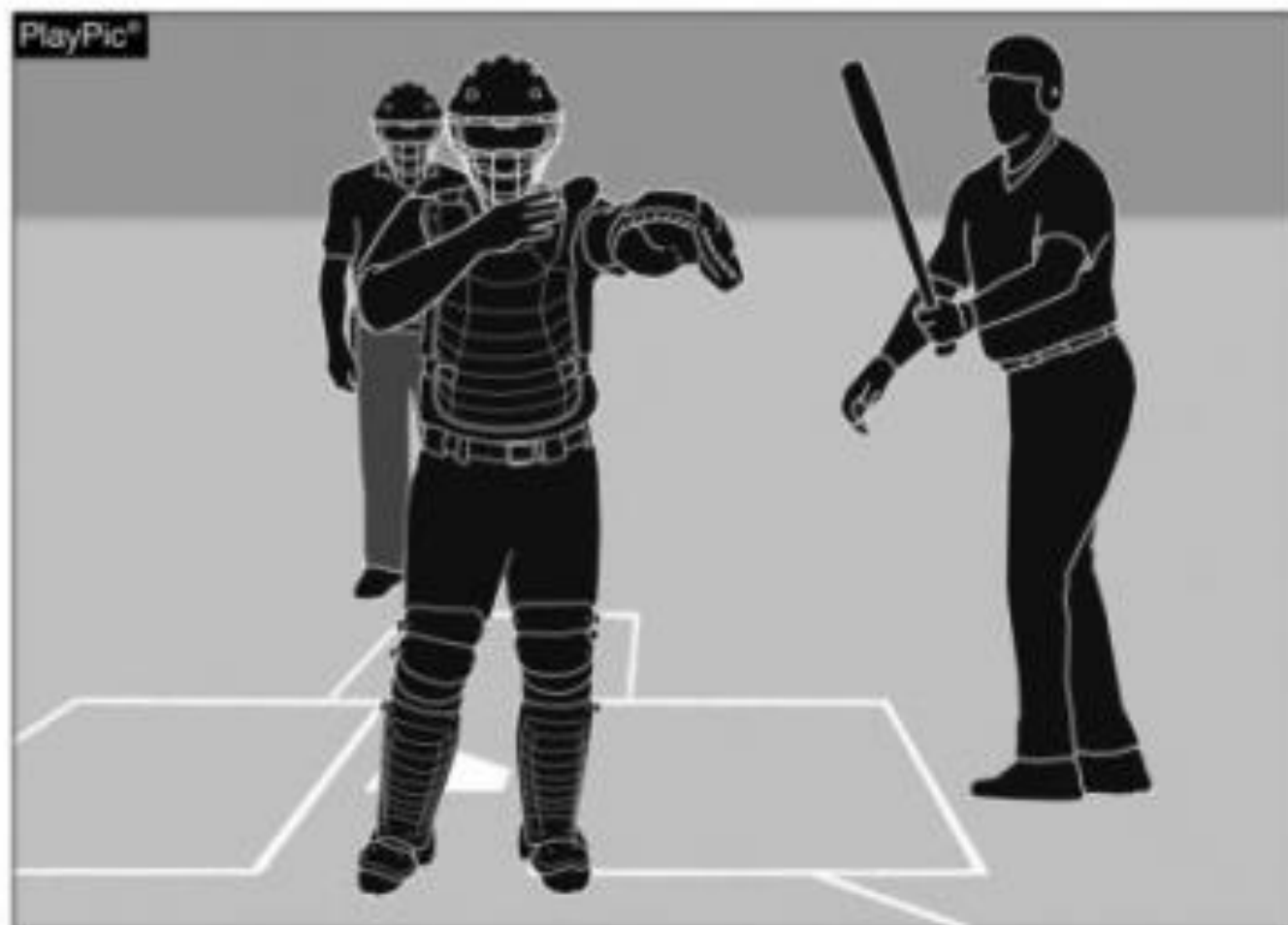
7-2-1f The ball is ruled foul and a strike is charged to the batter when a batted ball contacts the batter in the batter's box.



7-3-1 The batter must keep at least one foot in the batter's box while receiving his signs from the third base coach.



7-3-1 Exception A The batter may leave the batter's box after he swings at a pitch and misses.



7-3-1 Exception G The batter may leave the batter's box when the catcher leaves the catcher's box to adjust his equipment or give defensive signals.



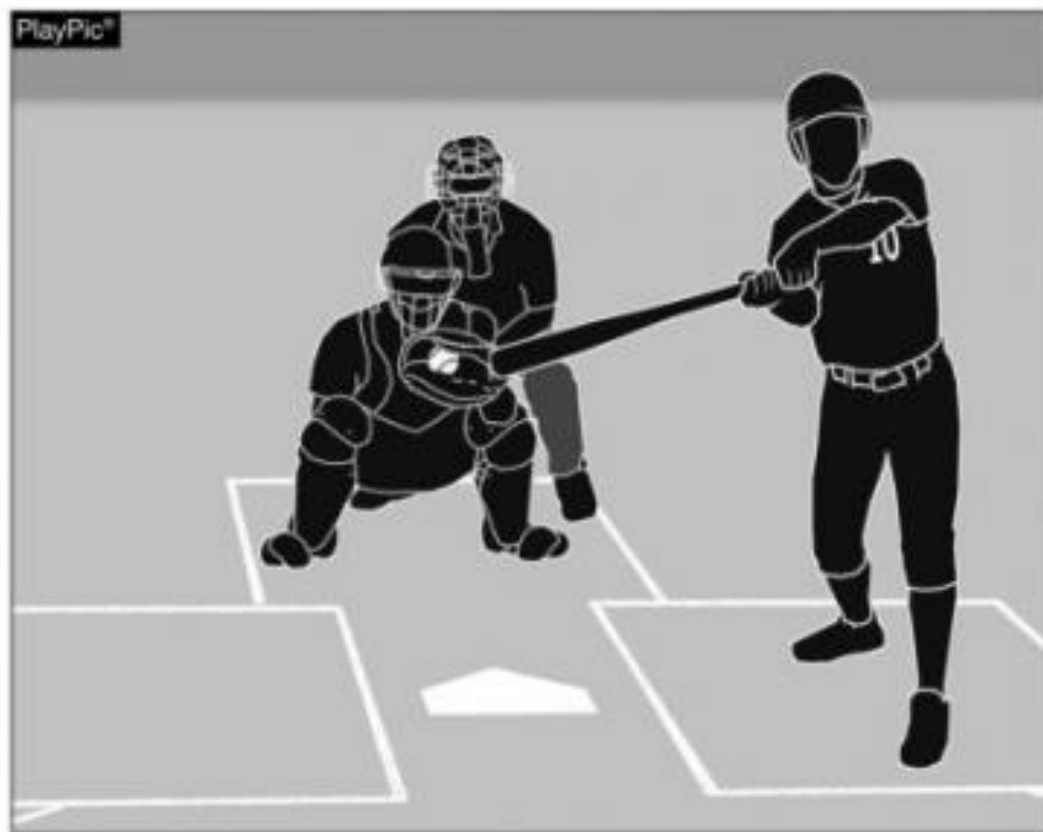
7-3-2 Both batters have illegally hit the ball. In PlayPic 1, the batter's front foot is entirely outside the box when he makes contact with the ball. In PlayPic 2, the batter's back foot is touching the plate. A batter may not touch the plate when he makes contact with the ball, even if part of his foot is in the batter's box.



7-3-3 A batter shall not disconcert the pitcher by stepping from the box on one side of the plate to the box on the other side while the pitcher is in position ready to pitch.



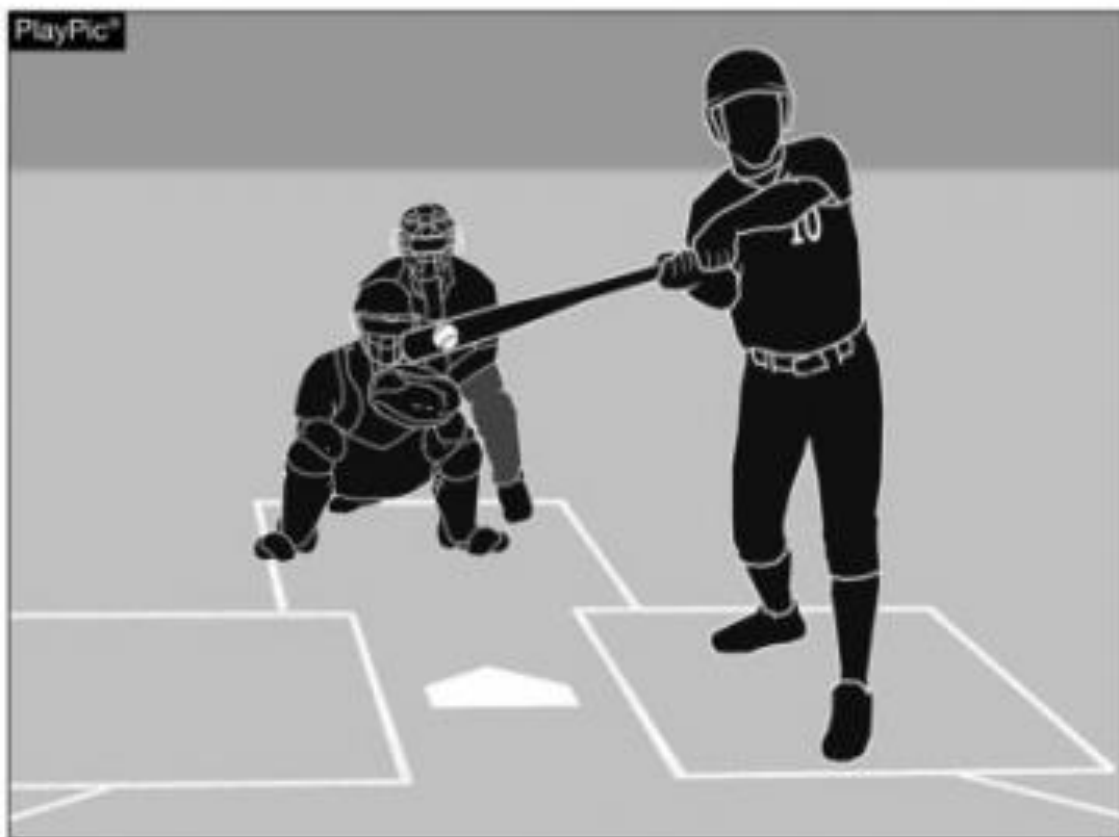
7-3-4 If the batter permits a pitch to touch him, the ball is dead, the batter remains at bat and the pitch is ruled a ball or strike. If the pitch is ball four, the batter walks (PlayPic 1). If the pitch is strike three, the batter is out (PlayPic 2).



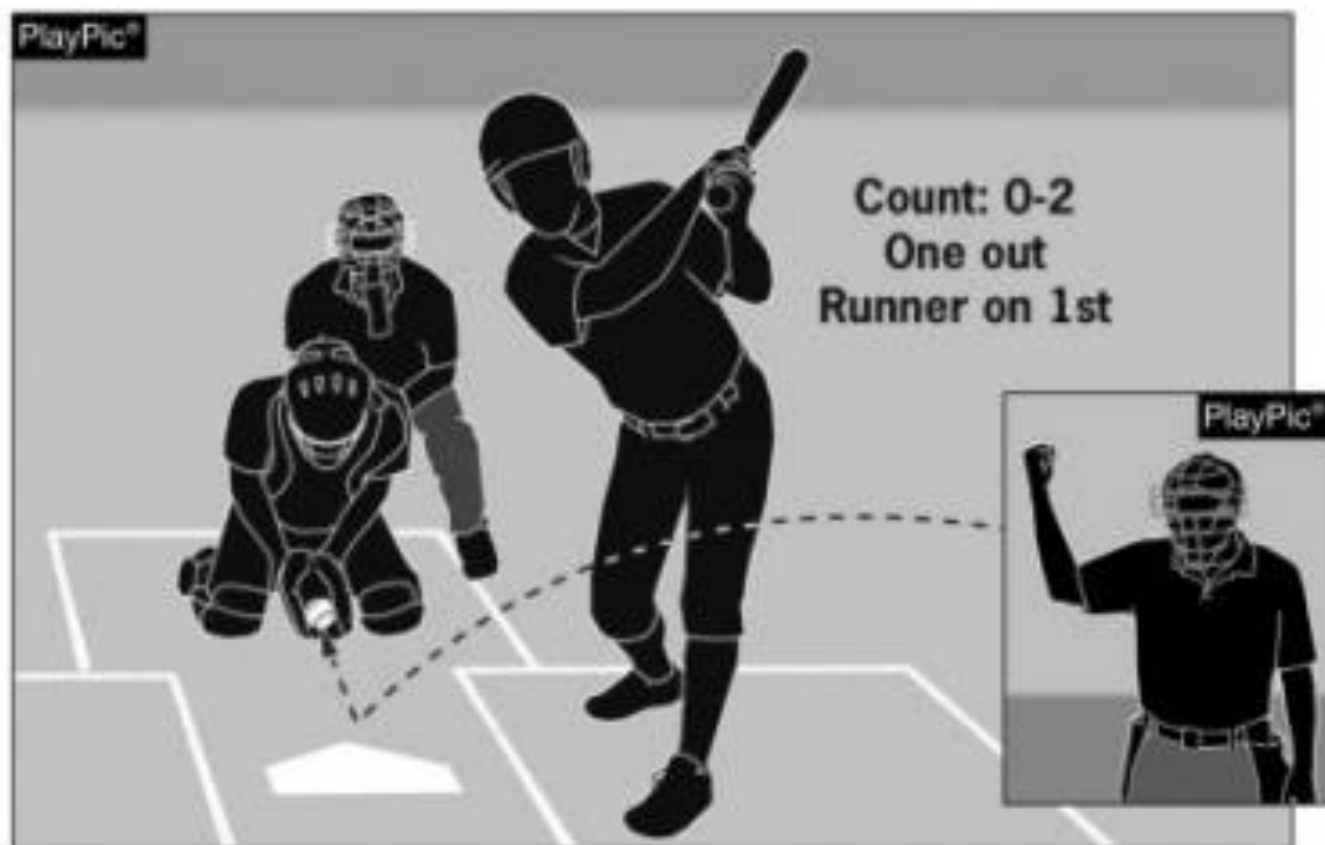
7-3-5 The batter has committed interference by leaning over the plate on his follow-through and impeding the catcher's ability to throw.



7-3-6 If the bat breaks and is hit by the ball or hits a runner or a fielder (PlayPic 1), no interference shall be called. If a whole bat is thrown and interferes with a defensive player attempting a play (PlayPic 2), interference has occurred and shall be called.



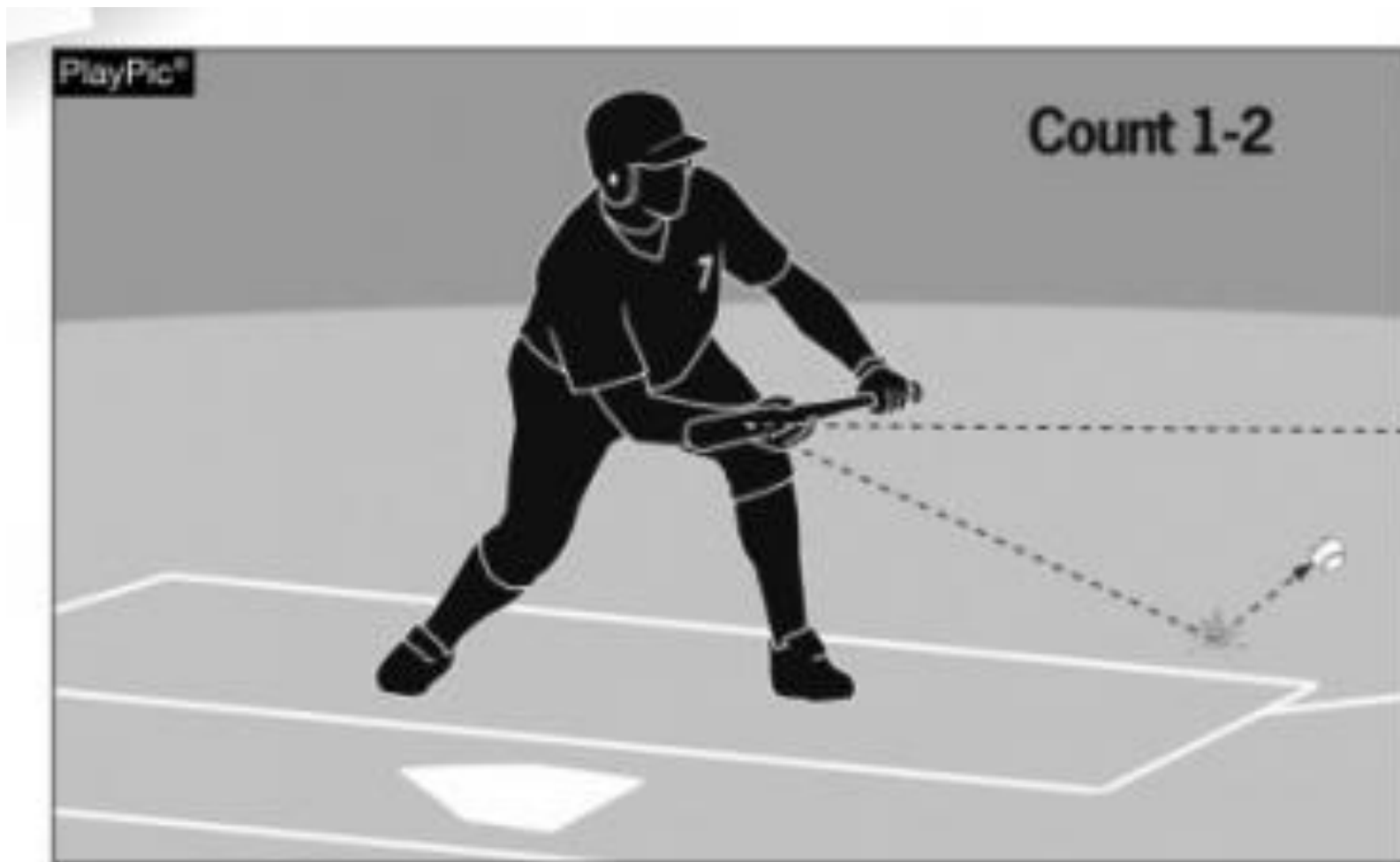
7-4-1a A batter is out when the batter enters the batter's box with an illegal bat (see 1-3-5) or is properly discovered having used an illegal bat. This batter is declared out for attempting to use a bat that has a -4 weight/length ratio. The head coach faces penalties when his player uses an illegal bat. See Rule 4-1-3b.



7-4-1b With a runner on first and less than two outs, the batter is out when a third strike is not caught. If there are two outs or if no runner occupies first base, the batter is not out unless the third strike is caught. He is entitled to try to reach first base before being tagged or thrown out.



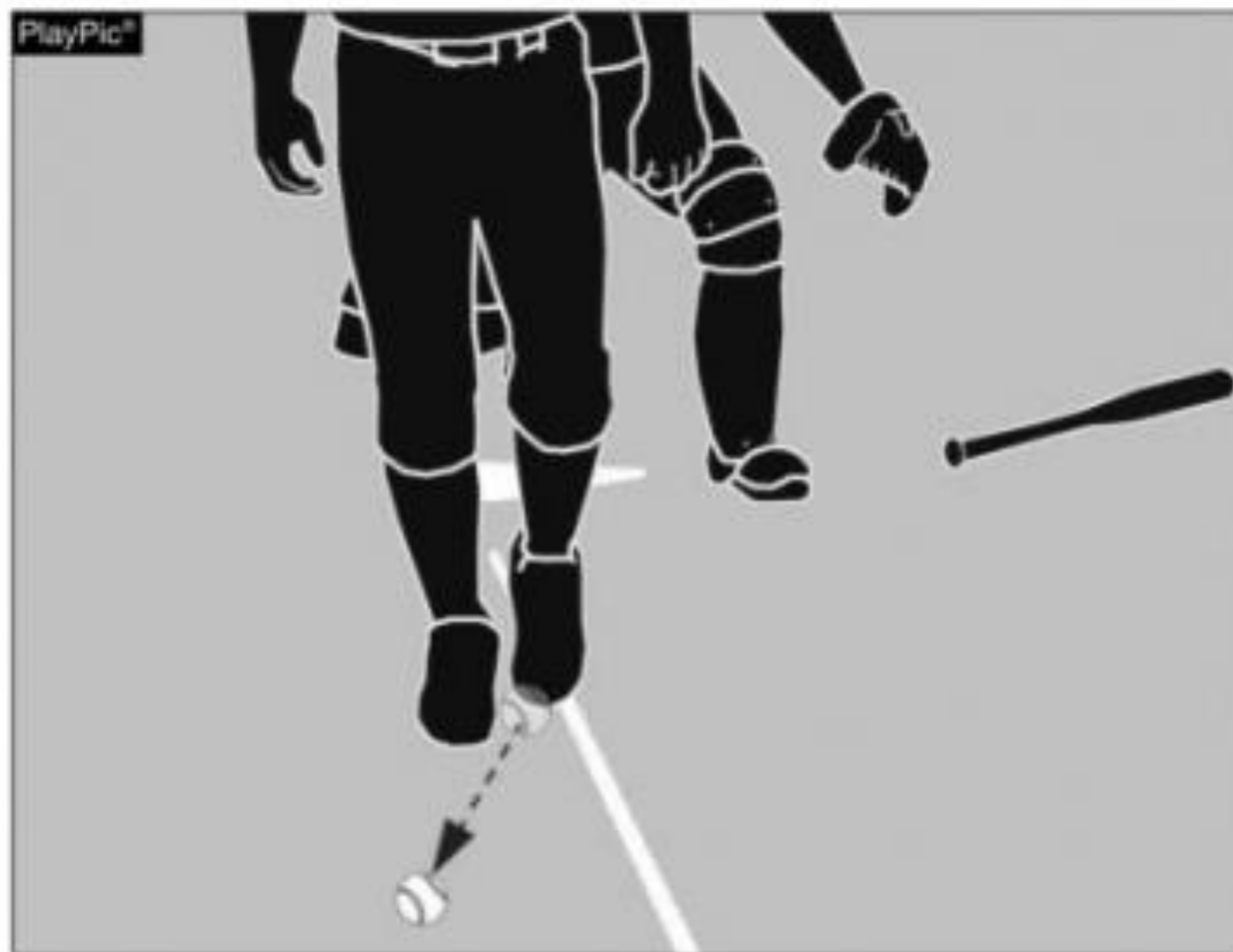
7-4-1d A batter is out when a foul ball (other than a foul tip not a third strike) is caught by a fielder or such catch is prevented by a spectator reaching into the playing area (8-3-3e Exception).



7-4-1e A batter is out when an attempt to bunt on third strike is a foul.



7-4-1f When a coach/player interferes with the third baseman, who is attempting to field a foul fly ball, the batter is out and the ball is dead.



7-4-1i A batter is out when he intentionally deflects a foul ball which has a chance of becoming fair.